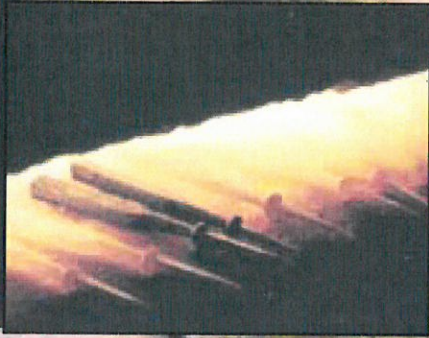


More than 150 years of Craftsmanship



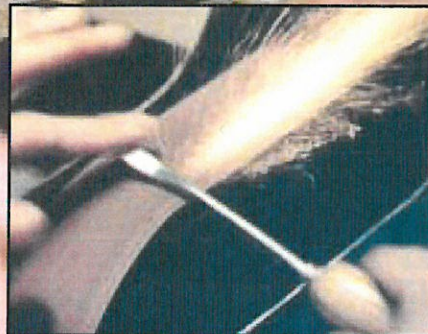
In the furnace, after being tapered and bolstered, prior to drawing out to length.



The blade being drawn out to size and length under the spring hammer.



Hand forging - a highly skilled process in the traditional manner.



The blade receiving its final polish and finish.



Testing the finished blade for hardness.



TRADITIONAL SKILLS - MODERN TECHNOLOGY

Acorn tools are world renowned and have been made by Henry Taylor since 1834, combining the traditional pride and skills of those far off days with the aids of modern technology. Only the best quality Sheffield steel is used, coupled with advanced heat treatment, to ensure that the finest of cutting edges is not only achieved but also maintained.

Many of the lower quality tools produced elsewhere are made under drop stamps or presses but Henry Taylor believe that only the hand forging method used by the Acorn craftsmen can produce the correctly shaped blade, with the best metallurgical qualities.

Only Henry Taylor's unique combination of traditional skill, individualised production, Sheffield's best steel, overlaid with the necessary technology, can produce the wide variety of tools with the precision of form and excellence of cutting edge demanded by skilled woodcarvers throughout the World.

CONTENTS

WOODCARVING TOOLS

Amateur & Professional	2
How to Order	3
Cutting Edge Profiles	4-5
Sculpture Tools	6
Unshouldered	6
Print & Blockcutters	
Cogelov Skew Gouges	7
Michael Painter Carving Tools	7
Carving Tool Sets	8
Selected Sets	9
Micro Carving Tools	10
Rifflers	10
Woodcarver s Punches	11
Accessories	11

WOODTURNING & WOODWORKING TOOLS

Introduction	12
Gouges	12-13
Chisels	13
Scrapers	14
Heavy Duty Bowl	14
Turning Scrapers	
Beading Tools	14
Parting Tools	15
H.S.S. Woodturning Tools	15-19
Supertip 2000	19
Woodturning Tool Sets	20
Hints on Sharpening	21

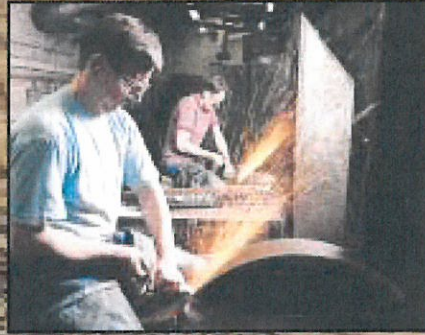
Cover Photo

Woodturnings by Ray Key

Woodcarvings by Michael Painter



Final blade shaping - willow twigs, a natural shock absorber, hold the punch.



Wheel grinding operations giving an individual profile to every blade.



Meticulous inspection maintains the Henry Taylor reputation - quality and reliability.



WOODTURNING AND WOODWORKING TOOLS

Diamic brand woodturning tools have been produced in Sheffield by skilled craftsmen, from the finest steel for more than one hundred and fifty years. The manufacture of these tools marries traditional hand crafting and forging skills with modern heat treatment and finishing techniques to give the quality of design, finish and edge retaining properties demanded by woodturners of today. Stringent control ensures that the best Sheffield steel is selected. Each tool is carefully forged, correctly hardened and tempered, then hardness-tested to guarantee edge retention.

Many tools unique to Henry Taylor have been designed in co-operation with some of the worlds leading woodturners e.g. Roy Child, Dale & Darrel Nish, Richard Raffan, Rude Osolnik, Kip Christensen, Bonnie Klein, Ray Key and Rudolph Dereks.

Amateur & Professional

Henry Taylor Tools produce many different shapes and sizes of carving chisels, many of these being made in two basically differing styles, which is, perhaps, currently the most extensive range available. *Professional* or Workmen's tools are longer (blade length 4 ³/₄" [119mm]) with uniform black non-reflective finish, except on the insides which have a straw coloured ground surface.

Amateur or *Ladies* tools by comparison are shorter (blade length 3 ¹/₂" [88mm]) and are bright ground all over and finished straw colour. The only difference between the two styles are finish and length, otherwise the quality and shapes are identical. However, the professional range is more extensive. Professional tools are traditionally selected by the experienced carver, particularly for heavier work and being longer can be repeatedly sharpened. Amateur tools being shorter are, perhaps, more easily controlled by the less skilled or by the smaller hand and possess all the inherent qualities of the professional tools. The Henry Taylor identification system uses four digit numbers and the professional tools commence with 37..., and the amateur 24... Fishtail tools are available only in the professional length, prefix 50...

Straight Tools

These tools are straight along the length of the blade but vary from flat across the blade up through very shallow sections to deep V shapes.

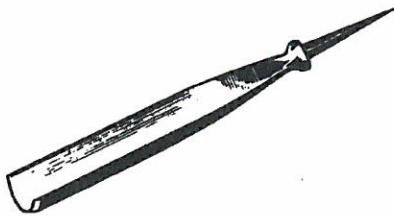
Chisels

The first tools in the range are 2411 amateur and 3701 professional, which somewhat resemble an ordinary straight chisel but with rounded bevel on each side of the cutting edge. The second tools in the range are 2412 amateur and 3702 professional, which are the same as 2411 and 3701 except that the cutting edge is skewed to facilitate cutting into very sharp corners. Available in product numbers: Straight 3701 and 2411 Skew 3702 and 2412



Gouges

The first gouges listed are the 2413 and 3703 which exhibit a very shallow curve across the blade and so on to 2421 and 3711 which have a very deep U section. All of these tools with a curve or U across the blade are called gouges, they are the most used carving tools and are suitable for heavy stock removal with the wider tools having the advantage of not splitting the wood along the grain as would a flat chisel, or for cutting grooves or C cuts when used vertically. Gouges are available for both amateur and professional, up to 1 ¹/₂" wide in the shallower sections and 1 ¹/₂" wide in the medium and deeper shapes. Available in product numbers: 3703 to 3711 and 2413 to 2421 inc.



Parting Tools

These are straight tools exactly as the previous category, but are V shaped in section. Three different angles of V are available in both amateur and professional ranges up to ³/₄" wide in the deepest V, ³/₄" in the medium and 1" in the shallowest. Additionally the winged parting tool - a very shallow V with curved sides in the professional style only is available, and is used mainly for cutting V grooves, outlining letterwork etc. Available in product numbers: 3745, 3739, 3741, 2455, 2449, 2451 and 3747



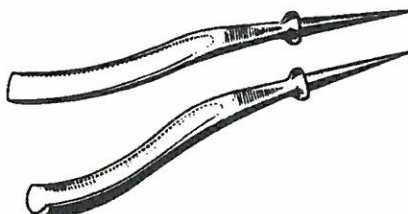
Veiners

Veiners are deep narrow gouges which are used for fine lines, lettering, detail, etc. Available in product number 3748 up to 1 ¹/₂".



Bent or Curved Tools

These tools are exactly the same as the straight tools except that they are curved along the length to facilitate cutting in recesses, inside bowls and curves, etc. All are available in both professional and amateur ranges of sections and widths except that the two straight cross section chisels (i.e. square and skew ends) are not made in the form. Available in product numbers: 3712 to 3720 inclusive and 3746, 3740, 3742, 2422 to 2430 inclusive and 2456, 2450, 2452.





How to order

Read the following text and quote:

1. STYLE
(Amateur or Professional)

2. TYPE OF HANDLE
(Beech or Pau Marfin)

3. DESCRIPTION

4. CUTTING EDGE SHAPE

5. SIZE

EXAMPLE:

- Professional Ref 37

- Pau Marfin

- Straight Gouge

- 06

- 3/8"

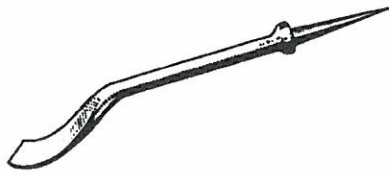
Check individual tool shapes chart (*centre spread*) and ensure size required is available.

Spoon Bit and Spoon Bent Tools

These tools are specifically designed for carving in the awkward spots, generally inside tight curves i.e. concave surfaces. The general appearance of these tools is rather like a spoon with the tool form being confined to a short spoon-bowl like curved or bent area on the end of the shank. Both amateur and professional types are available in the spoonbit form in the full range of sections and widths, except the shallow V form. Due to the curvature of the bowl end of the tool it is necessary to offer the skew chisels in both left and right handed forms.

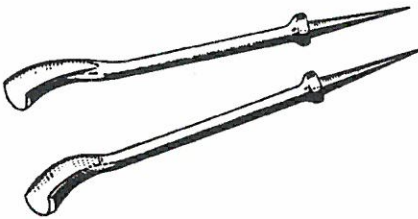
RH: 2432 Amateur 3722 Professional LH: 2433 Amateur 3723 Professional

Also: 3721, 3724 to 3732 inc, 3743 and 3744, 2431, 2434 to 2442 inc, 2452, 2454.



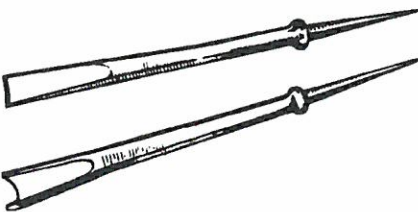
Back Bent Tools

Very similar to the spoon bit type except that the bowl end of the tool is reversed (upside down). Available for both the amateur and professional in the full range of sizes but only in the shallower sections. Available in product numbers: 3733 3738 and 2443 to 2448 inclusive



Fishtail Tools

These tools are longitudinally straight and have a straight shank which widens out progressively to the cutting edge resembling a fish's tail. Made only in the professional form, but the full range of straight and gouge sections up to 1". V's are not available. The particular benefit of these tools is that, mainly in the larger sizes, the shank does not interfere when cutting deeper areas in the carving and visibility is improved. Available in product numbers: 5001 to 5011 inclusive



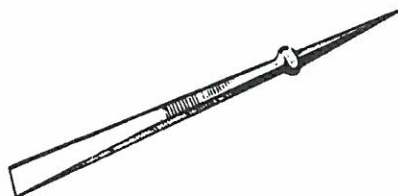
Long Pod Tools

Similar in principle to the fishtails but the cutting form is taken further back down the shank and they are available in all sections except the V and only up to 1" wide. The advantages and uses of these tools essentially is similar to the fishtails and they are only made in the professional style. Available in product numbers: 3761 to 3771 inclusive.



Allongee Tools

Again somewhat similar to the fishtails and long pod tools except there is no parallel shank at all - the cutting form tapering back to the bolster. These tools are very robust and have the advantage of good visibility around the tool and the ability to cut without damaging the foreground. Available only in the professional style and in the straight, shallow and medium gouge sections, but up to 2" wide. These are the tools for heavy work. Available in product numbers: 3791 to 3799 inclusive



Cutting Edge

FISH TAIL TOOLS Black outside Straw colour inside <i>A quarter inch tool is 4 1/4" long from shoulder</i>	AMATEUR TOOLS Straw colour all over <i>A half inch tool is 3 1/2" long from shoulder</i>				PROFESSIONAL TOOLS Black outside Straw colour inside <i>A half inch tool is 4 3/4" long from shoulder</i>					
	No.s for straight tools	No.s for curved tools	No.s for spoon bent tools	No.s for back bent tools	No.s for straight tools	No.s for curved tools	No.s for spoon bent tools	No.s for back bent tools	No.s for long pod tools	No.s for allongee tools
5001	2411		2431	-	3701	-	3721	-	3761	3791
5002	2412		2432 R.H. CORNER 2433 L.H. CORNER	-	3702	-	3722 R.H. CORNER 3723 L.H. CORNER	-	3762	3792
5003	2413	2422	2434	2443	3703	3712	3724	3733	3763	3793
5004	2414	2423	2435	2444	3704	3713	3725	3734	3764	3794
5005	2415	2424	2436	2445	3705	3714	3726	3735	3765	3795
5006	2416	2425	2437	2446	3706	3715	3727	3736	3766	3796
5007	2417	2426	2438	2447	3707	3716	3728	3737	3767	3797
5008	2418	2427	2439	2448	3708	3717	3729	3738	3768	3798
5009	2419	2428	2440	-	3709	3718	3730	-	3769	3799
5010	2420	2429	2441	-	3710	3719	3731	-	3770	-
5011	2421	2430	2455	-	3711	3720	3732	-	-	-
5045	2455	2456	-	-	3745	3746	-	-	-	-
5039	2449	2450	2453	-	3739	3740	3743	-	-	-
5041	2451	2452	2454	-	3741	3742	3744	-	-	-
